


Sotheby's
INTERNATIONAL REALTY

Contemporary Custom on Over 1.5 Acres

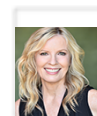
15895 Berkley Court, Chino Hills, CA 91709

\$1,299,000

 Bedrooms: 4
 Bathrooms: 3

EXTRAS:

- 3 Car Garage
- Central Air
- Fireplace
- Living Space: 2,622 sq ft
- Lot Size: 69,696 sq ft



Sally Tornero
01779417

 909-455-3203

Property Description

This custom contemporary estate is situated on over 1.5 acres between Chino Hills and Brea/Yorba Linda off Carbon Canyon Road in the gated community of Oak Tree Downs. A gorgeous home that features amazing 2 story vaulted ceilings with walls of windows overlooking the expansive grounds and hills beyond. The great room demands attention as you enter. You'll immediately be drawn in by the openness of the high ceilings and the light from the massive windows. The elegant fireplace is also an attention getter and is the centerpiece of the room. The designer kitchen is a work of art. Features include leathered quartzite counter tops, hand painted travertine tile backsplash, travertine flooring, a hammered brass sink, custom solid wood cabinets with pullouts and top-quality appliances. The dining room features crown molding, has space for a large dining table and is open to the great room. There is a wide hallway that leads to 2 bedrooms, 2 bathrooms and an office downstairs. The downstairs office could be a 4th bedroom. Upstairs is the beautiful master bedroom, attached bath, sunroom and bonus office or craft room. The upstairs hall is open to the great room below and has beautiful views of the oak trees and hills. The master bedroom and bath are like a Zen retreat. The bathroom is amazing with its large soaking tub and separate shower. Relaxing here would be easy. In the mornings, you could wake up to your view from the sunroom and be inspired every day. The outdoors can be enjoyed from every angle while sitting on the stone patio with lattice cover on the west side of the house and on the other patio just outside of the kitchen on the east side. Outdoors, the waterfall cascades down the hillside into the sparkling pool. The spa is situated just above the pool area amid the oaks. There is a long concrete driveway leading up to the parking area and 3 car garage. Here you have the best of both worlds, with the beauty, seclusion and natural setting of the canyon area and the convenience of living near town with shops, restaurants, schools and the 57, 71 and 60 freeways close by.



MORE ON:
www.15895Berkley.com