



Top Floor, Front-Facing Corner Unit in Burbank's Famed Media District

151 North Maple Street 213, Burbank, CA 91505

\$615,000

🛏 Bedrooms: 2  
🚿 Bathrooms: 2

**EXTRAS:**

- Living Space: 1,076 sq ft
- Lot Size: 16,734 sq ft

## Property Description

Lined with Maple Trees and situated on one of Burbank's most desired streets, you're between some of the hottest restaurants on W Riverside Dr and Warner Brothers Studios on W Olive. Top Floor, Front-Facing Corner Unit in Burbank's Famed Media District. Welcome to this bright pristine condo with TreeTop views of a lush Avocado Tree and Burbank's tallest building, "The Tower". As you enter, you're greeted with a spacious open living area with high ceilings, a fireplace and a balcony off the living section. The generous size dining area is perfect for hosting large gatherings. Carpet in the living area and bedrooms and tile throughout the dining and kitchen. Bright galley kitchen with loads of cabinet space. Two generous sized bedrooms with the Master offering a walk-in closet and ensuite bath. A second jack-and-jill full bath off the hallway to the 2nd bedroom makes ideal for guests or a home office. Washer/Dryer in Unit. Central A/C. Two ceiling fans in the living area and in both bedrooms provide great air flow. Dual pane windows and slider to balcony. 2 parking spaces with additional storage in the garage. Small complex with only 21 units and LOW HOA Dues.



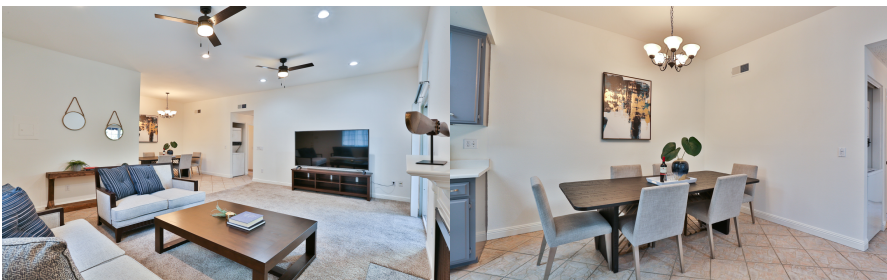
Anna Lancaster  
CalBRE Lic.#01829692

📞 818-919-9866



Amjad Albasel  
CalBRE Lic.#01954713

📞 818-486-0677



MORE ON:  
[www.151maple213.com](http://www.151maple213.com)