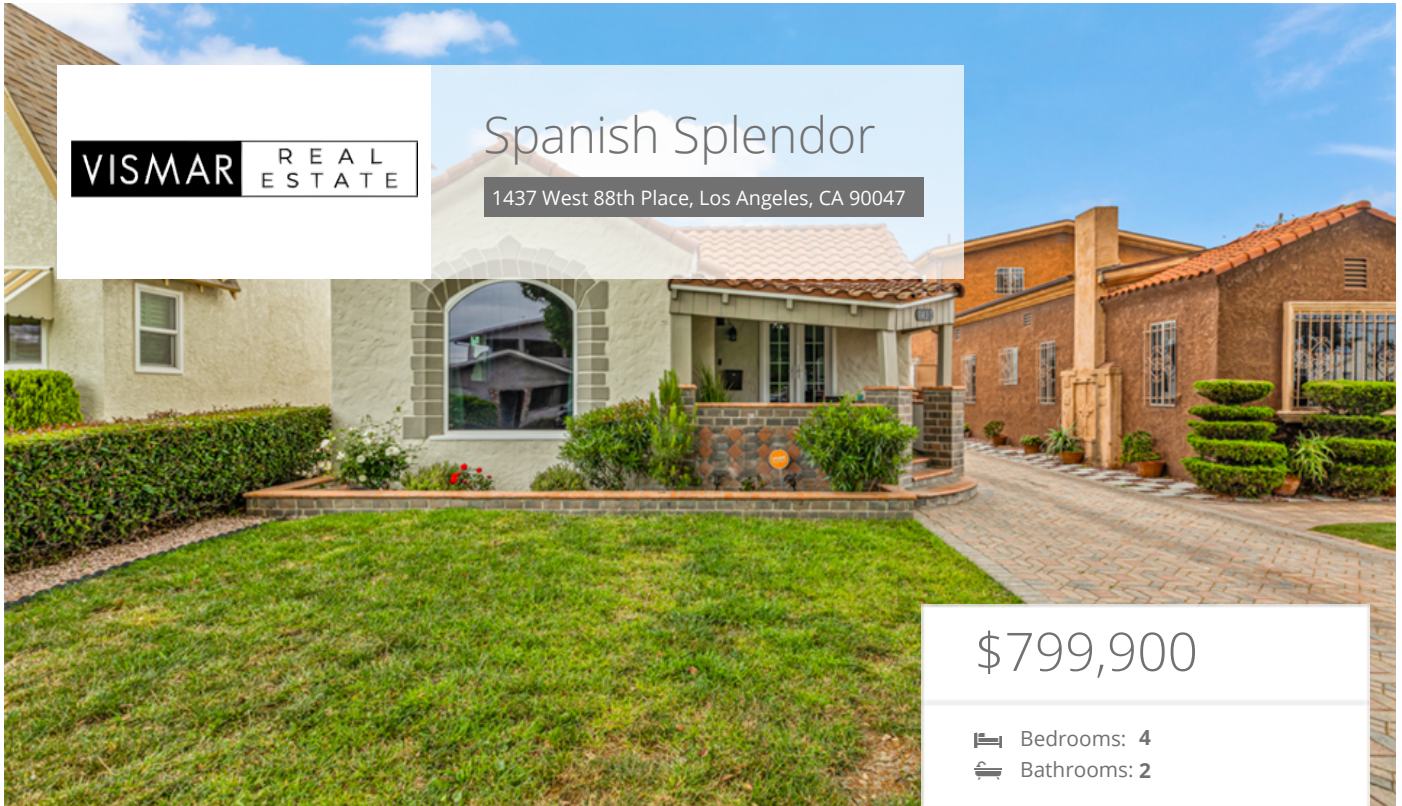


VISMAR REAL ESTATE

Spanish Splendor

1437 West 88th Place, Los Angeles, CA 90047



\$799,900

🛏 Bedrooms: 4
🚿 Bathrooms: 2

EXTRAS:

- Central Air
- Fireplace
- Open Floor Plan
- Living Space: 1,590 sq ft
- Lot Size: 4,520 sq ft

Property Description

Welcome to this gorgeous classic Spanish architecture LA home with a hint of modern design. This 4-bedroom and 2-bathroom gem is conveniently located on a quiet street in Los Angeles. Just 2 miles from Sofi Stadium and close proximity to LAX, the beach, and its central location, this property provides easy access to all the amenities and attractions Los Angeles has to offer. Step inside and be captivated by the comfortable and modern living experience this home offers. The grand arched ceiling and fireplace in the living room create a warm and inviting atmosphere. The dining room seamlessly opens to the remodeled kitchen, which boasts dark espresso cabinets, white quartz countertops, and stainless-steel appliances. You'll also find new windows, new exterior and interior paint, upgraded electrical, copper plumbing, water softener, PAID OFF SOLAR panels, AC, and central heating. Both bathrooms have been beautifully remodeled with tile floors and tile surrounds in the showers. Adding to the allure, the property boasts a 2-car garage that offers ADU (Accessory Dwelling Unit) potential, presenting an exciting opportunity for additional living space or rental income. With its desirable location, remarkable features, and immaculate design, this home offers a truly extraordinary living opportunity. Embrace the charm of Spanish architecture, the convenience of modern amenities, and the allure of Los Angeles living.



Sonia Vasquez
DRE #01836081

📞 310-968-0877



Fernando Vasquez
DRE #01993115

📞 310-968-0076



MORE ON:
www.1437West88th.com