

COMPASS

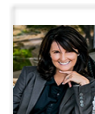
1204 South Westlake Boulevard Unit B, Westlake Village, CA 91361

\$1,200,000

🛏 Bedrooms: 2
🛁 Bathrooms: 2.5

EXTRAS:

- Living Space: 1,692 sq ft
- Lot Size: 3,920 sq ft



Kimberley Pfeiffer

DRE# 01047570

📞 310-867-0033

Property Description

Life is better at the Lake! Rarely available, extraordinary lakefront townhome in Westlake Bay. This property has been extensively remodeled and upgraded with tasteful craftsmanship and quality throughout. This waterfront home showcases the definition of indoor/outdoor entertainment living. Stunning expanded entertainment kitchen features solid wood custom cabinets with slow closing European hinges, top of the line appliances including a 36" Bertazzoni range and hood, 42" French door refrigerator, Viking under cabinet drawer microwave, Farmhouse sink, and oversized prep island with seating. The open concept floorplan delivers lakefront views from the kitchen, dining and living room. The attention to detail is evident with distressed engineered wood plank floors, custom iron railings, stacked stone, and renovated bath areas. A spacious primary suite with 2 closet areas and a lovely bath suite with an oversized shower and custom vanity with double sinks awaits on the second level. The bright second bedroom offers lake views and custom closet doors. An open loft area holds wonderful potential as a reading area, retreat, or exercise area. A serene exterior patio area provides wonderful entertainment space and is just a few steps from the lake. Private detached garage and additional assigned covered parking space, community pool, and clubhouse. Truly a remarkable offering in a coveted location.



MORE ON:
www.1204BWestlakeBay.com