

Pacific | Sotheby's
INTERNATIONAL REALTY

Vacant Land in West Murrieta

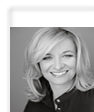
New Clay Street, Murrieta, CA 92562

\$337,700

🛏 Bedrooms: 0

🚿 Bathrooms: 0

EXTRAS:



Jana Farella

DRE #01843651

📞 858-444-0408

Property Description

Tremendous Opportunity in West Murrieta. Approximately Two Acres of Vacant Land located at the foothills of Cleveland National Forest, offering Beautiful Views of De Luz and Hills of Santa Rosa Plateau. West of Old Town Murrieta. Walk to the Historic Route 395 with Restaurants, Coffee Shops, Various Shops, Including Antique Shops, Boutiques and Beauty Parlors. Property is also located just two blocks from Murrieta Equestrian Park.

All paved roads, situated on the corner of New Clay and Ivy with easy access to I-15. Three parcels are included in sale, 906-200-010 (approx. 1.04 acre) & 906-200-011 (approx. 0.49 acre) and Street Vacation 21-7936, 24,128 Sq Ft.. Zoned RR. Bring your toys or/and your horses. Build your dream home!



MORE ON:

www.